

TARGETPROCESS ECLIPSE/MYLYN CONNECTOR USER GUIDE



v.2.17

Eclipse/Mylyn Connector User Guide

This document describes TargetProcess Mylyn Connector usage and configuration.

IMPORTANT NOTES	2
MYLYN INTEGRATION OVERVIEW	2
INSTALL AND CONFIGURE TARGETPROCESS MYLYN CONNECTOR	3
NEW TASK REPOSITORY AND QUERY CREATION.....	4
WORKING WITH TODO LIST	5
OTHER	7

IMPORTANT NOTES

- Mylyn should be installed in Eclipse.

Mylyn Integration Overview

With TargetProcess Mylyn Connector you may:

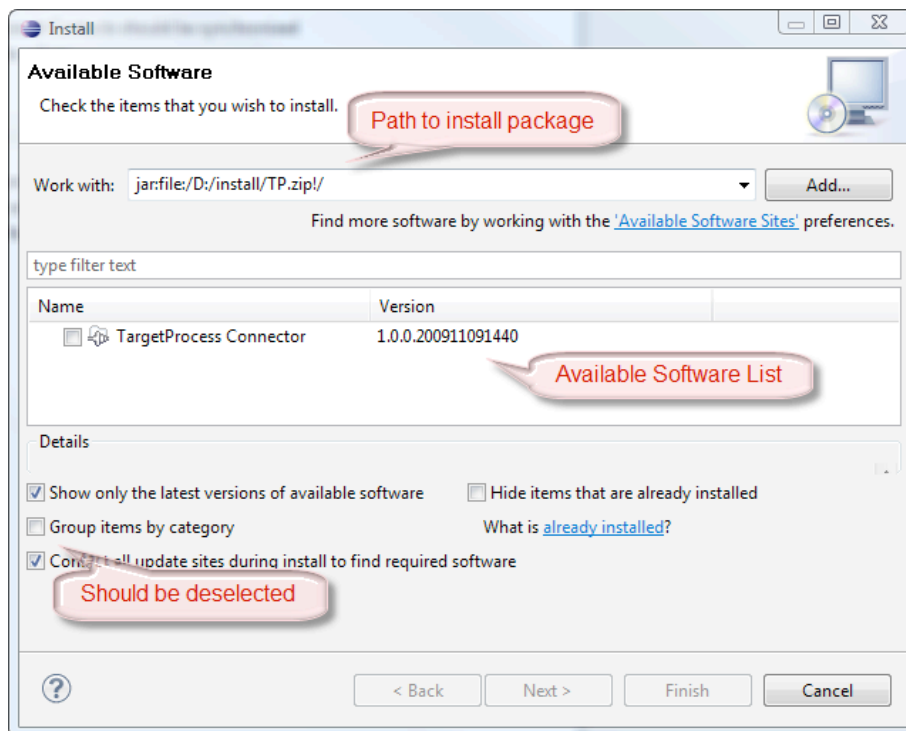
- See your ToDo list with all user stories, bugs, tasks and requests.
- Change entities states, names and descriptions.
- View attachments and comments.
- Add new comments.
- Sort entities.

Install and Configure TargetProcess Mylyn Connector

TargetProcess Connector for Eclipse installation process:

- 1) Download TargetProcess Mylyn Connector from <http://www.targetprocess.com/Product/Download.aspx>.
- 2) Start Eclipse.
- 3) Go to *Help -> Install New Software*.
- 4) Click *Add* button and fill *Location* field by the correct URL location or path to the downloaded Mylyn Connector archive.
- 5) Deselect *Group items by category* check-box.

TargetProcess connector appears in the *Available Software* list.



- 6) Select it, click *Next* button.
- 7) Accept the license term and click *Finish* button.
- 8) Go to *Window -> Open Perspectives -> Other*. Select *Team Synchronizing* from the list and click *OK* button.
- 9) Go to *Window -> Show View* list. Add *Task List* and *Task Repository* panels to view them.

New Task Repository and Query Creation

First of all you should click *Add Task Repository* button on the *Task Repositories* panel and select *TargetProcess* connector in the list. The form to provide connection settings appears.

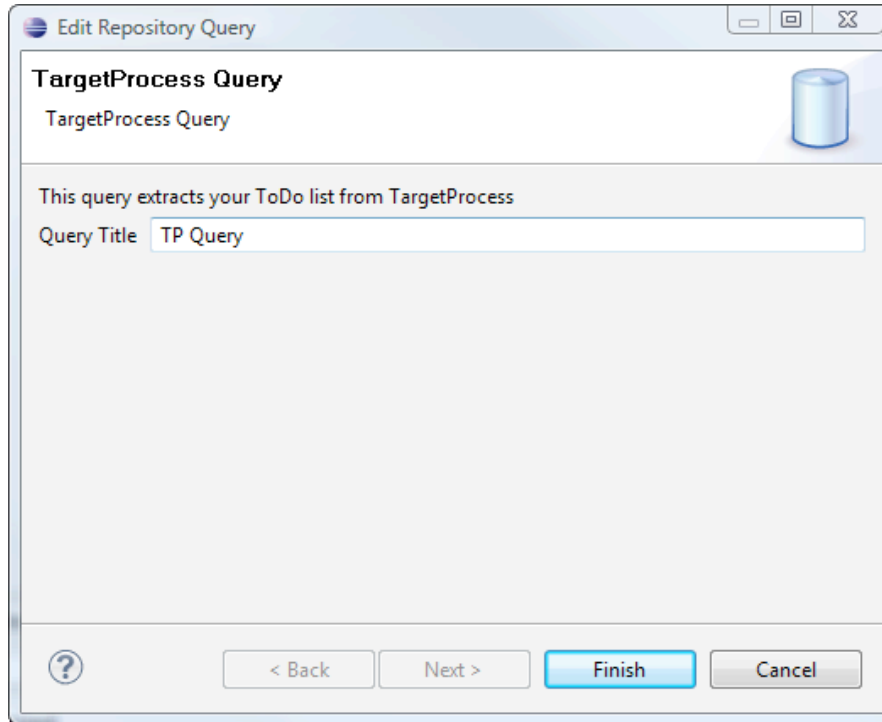
You should specify several connection parameters:

- **TargetProcess URL:** URL to TargetProcess.
- **Repository Name:** convenient repository name (optional field).
- **Authentication:** select authentication type.
- **Login and Password:** login and password of TargetProcess user in compliance with authentication type.

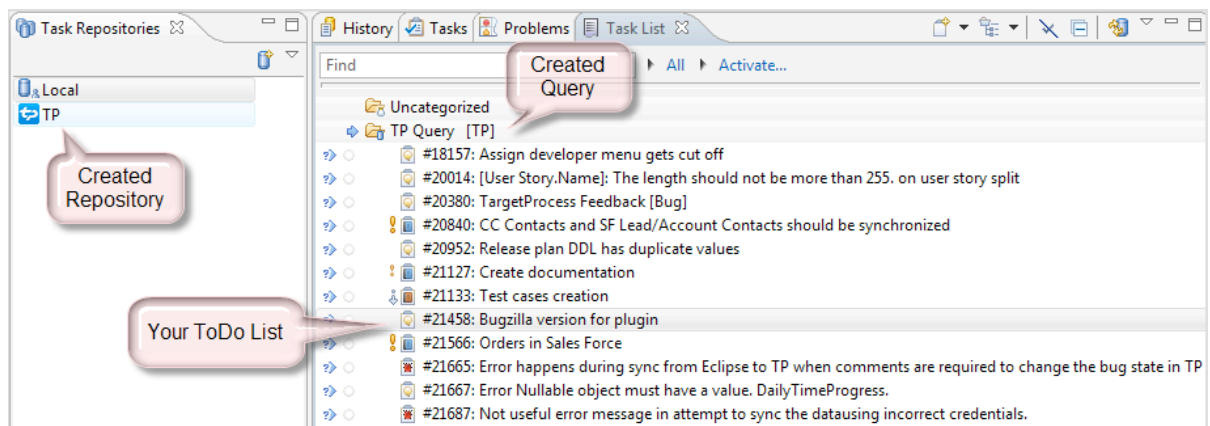
Push *Check connection* button to ensure that TargetProcess Connector can connect to TargetProcess server.

The screenshot shows a dialog box titled "Add Task Repository...". The "Connection settings" section is circled in red and contains the message "Authentication credentials are valid." Below this, there are several input fields: "TargetProcess URL" with the value "http://plan.tpondemand.com", "Repository Name" with the value "TP", "Authentication" set to "TargetProcess Authentication", "Login" with the value "admin", and "Password" with the value "admin". At the bottom of the dialog, there are buttons for "?", "Check connection", "< Back", "Next >", "Finish", and "Cancel".

Then click *Finish* button and create new query.



Fill in *Query Title* field and click *Finish* button. Synchronization process starts. Imported ToDo List appears in the *Task List* panel.



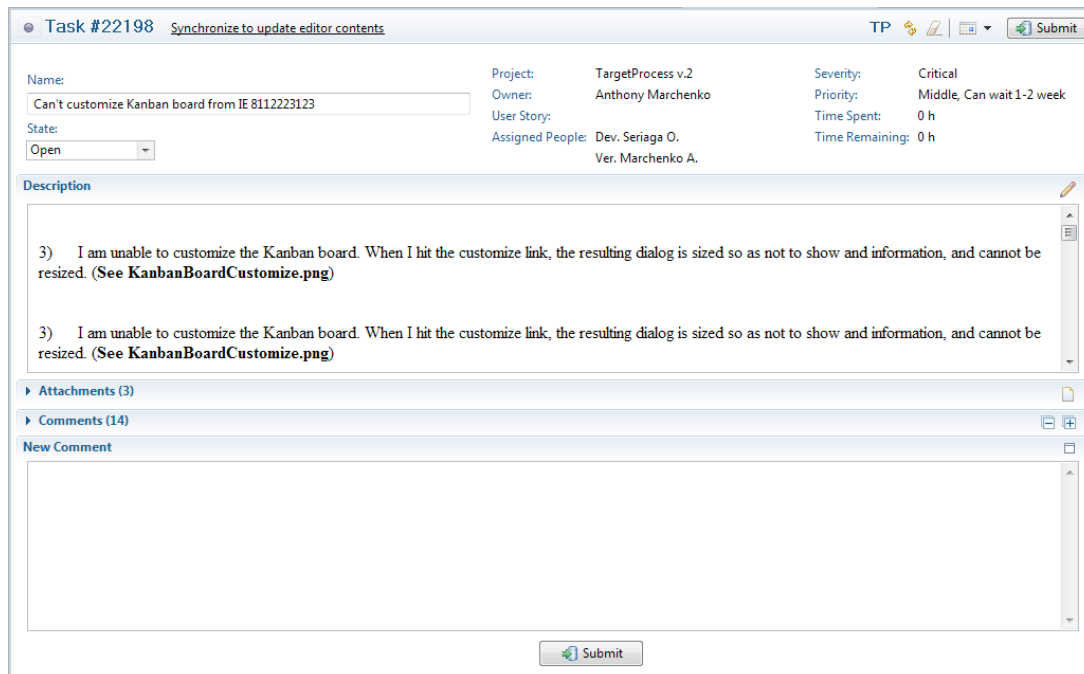
Working with ToDo List

ToDo list contains all your assignments. You may see all the bugs, tasks, user stories and requests from all the projects.

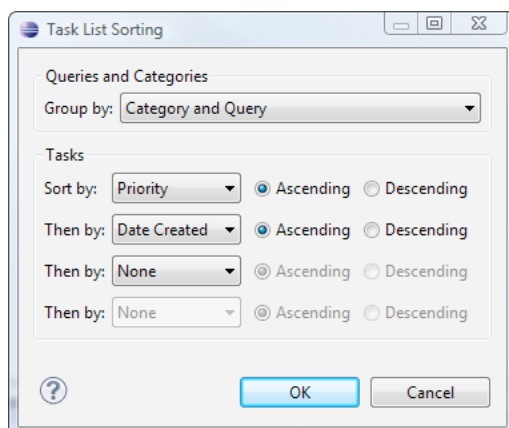
The following actions are available:

- **Synchronize query** – right click the query and click *Synchronize* to update the ToDo list with new assignments made in TargetProcess.

- **Synchronize entity** – right click the entity and click *Synchronize* to update the selected entity changes made in TargetProcess. Also it can be synchronized via double click.
- **View assignment details** – double click the entity to open its view window.

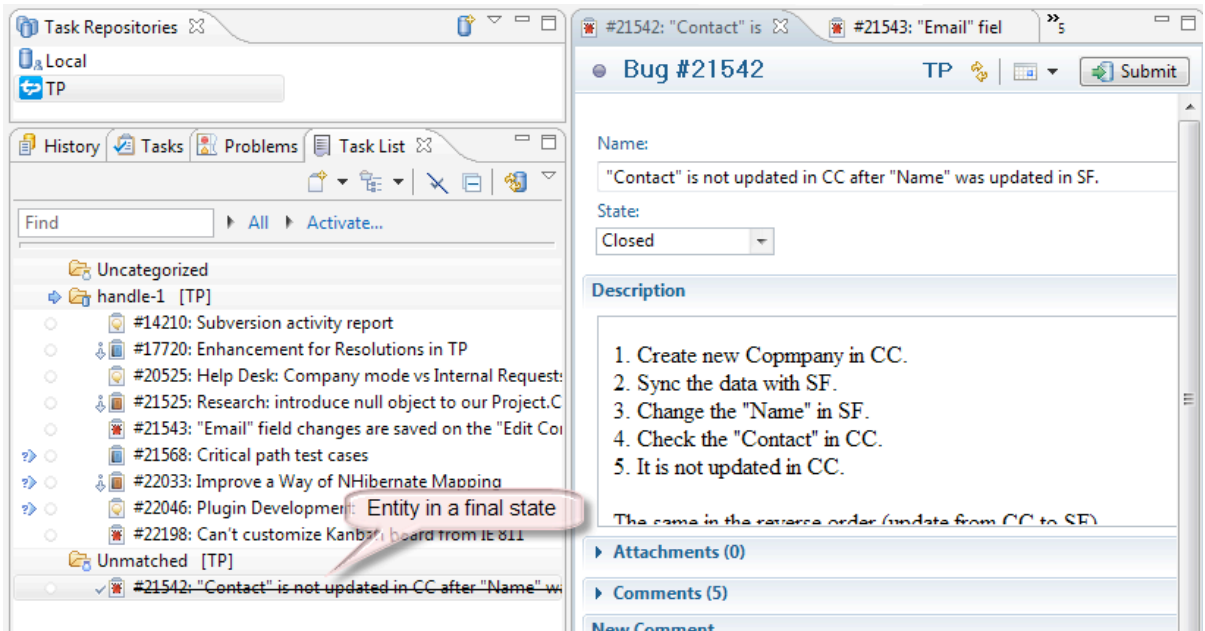


- **Change assignment details** – entity *Name*, *State* and *Description* can be changed in the entity view window. To change the entity *Description* click *Edit HTML* icon in the right corner of the Description window. Click *Submit* button to propagate the changes to TargetProcess.
- **Add new comments to assignments** – enter new comment to the *New Comment* window and submit the data.
- **Sort ToDo list** – go to *View Menu* -> *Sort* on the *Task List* panel. You can sort task list by different parameters in the appeared window.



Entities are moved to **Unmatched** query, which is created automatically in the following cases:

- Entities have been unassigned from the user.
- Entities states have been changed to inappropriate for user role states (for example entities in state *Coded/Fixed* will not be shown in the *Developers ToDo* list).
- Entities have been forwarded to the final state. Entities in a final state have strikethrough font.



Other

Please, email to support@targetprocess.com if any problems with TargetProcess Connector for Eclipse or visit TargetProcess Help Desk at <http://helpdesk.targetprocess.com>

If you have any questions about TargetProcess, just contact us:

Email: info@targetprocess.com

Web: <http://www.targetprocess.com>